



Compact 500JXX246

January 26 - 2009 first edition

AMATEUR RADIO RF POWER MOSFET AMPLIFIER



- Reduced Dimensions
- High Efficiency
- In/Out 50&70 - 144 MHz
- High Ventilation
- Oversize Switching Power Supply
- Low Weight
- **Best Quality**

GENERAL CHARACTERISTICS

Operating Band	50 / 70 / 144 MHz
Output Power (minimum)	500 Watt
Driving power	7 ÷ 10 Watt
Coaxial Relais Toitsu	Mod. CX140D input – CX600NC output
In / Out connectors 50&70 MHz	N female type
In / Out connectors 144 MHz	N female type
Input v.s.w.r.	1,3:1 max
Spurious and harmonic emission	Better than what CCIR and FCC req.
Mosfet efficiency	≥ 68 %
RF unit cooling	4 h.p. Axial fans in a redundant system
Power supply cooling (optional)	4 axial fans
Ambient working temperature	0 to 45°C
Protections	Non-stop reducing power type
AC power	185÷260 VAC 50-60Hz
AC power consumption	850 watt
Box dimensions	300 x 80 x 350 mm
Weight	9 Kg

* The above data is purely indicative; we may vary them without any warning

Compact 500JXX246 is a complete machine, "ready to go", the working class is "AB", it is extremely linear on SSB. Compactness, "ready to go", P.A. are on the vanguard on Ham's station; the reduce weight to exalt use on DXpedition in SSB, CW, WSJT; MS or EME.

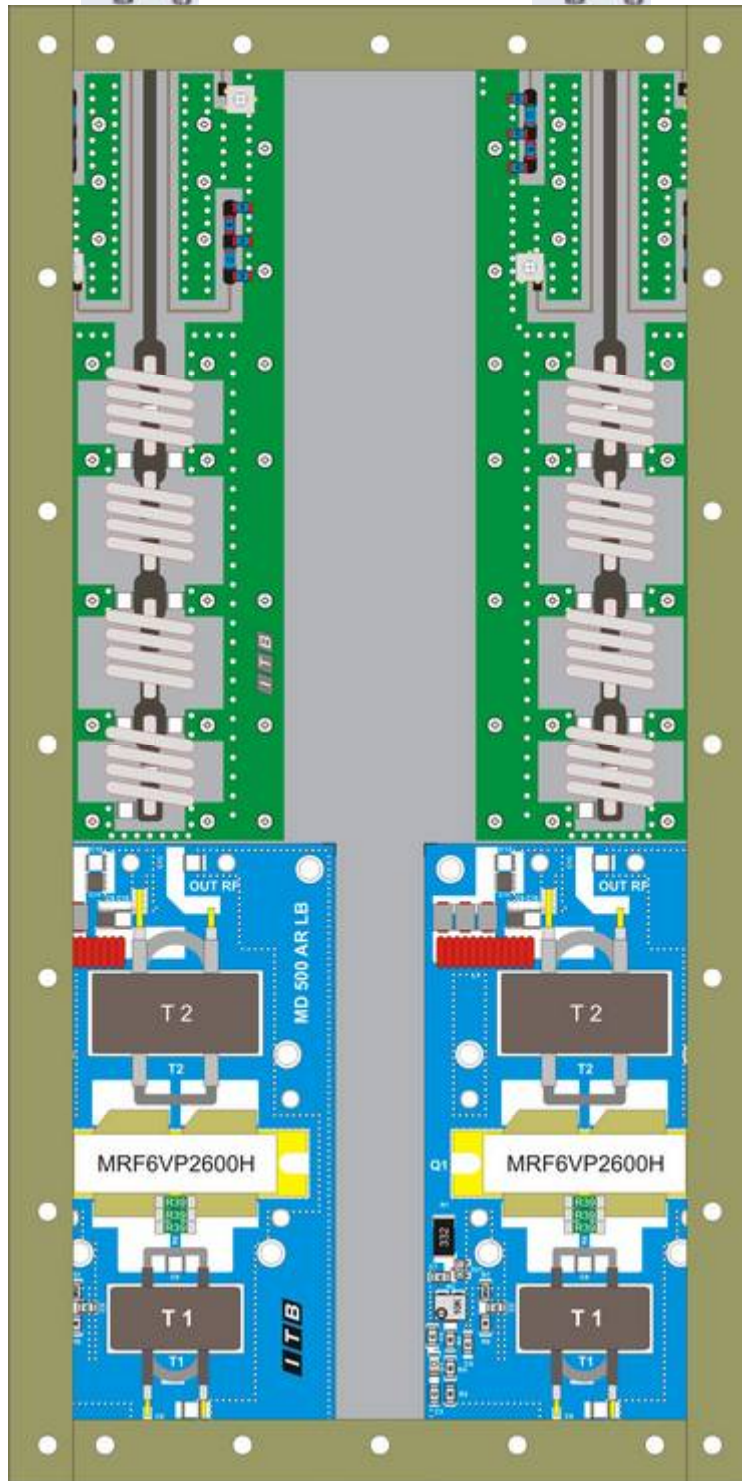
The P.A. machines are completed with: PCBoard RF power, power supply VDC, switching PCboard and coaxial relais, protection PCBoard (SWR, temperature), low pass filter and directional coupler with LCD instrument to read power out.

Marziali Sandro
www.iojxx.it
iojxx@iojxx.it

+ +39 3282899664

OUTPUT 50 & 70 MHz

OUTPUT 144 MHz



INPUT 50 & 70 MHz

INPUT 144 MHz



Marziali Sandro
www.iojxx.it
iojxx@iojxx.it

+ +39 3282899664